

ON-LINE GUIDE



**YOUR WIRELESS
INTER-TAINMENT
COMPUTER!**

Version 1.5.01

WHAT IS CYBIKO XTREME™?	5
Cy-Sign	5
CyID	5
Cybiko Xtreme™ Capabilities	5
Buttons/elements you will need to know	6
GET STARTED	8
Step 1: Check to make sure you have all necessary components	8
Step 2: Run the installation CD on your PC	8
Step 3: Turn on your Cybiko Xtreme™	8
Cybiko Xtreme™ keyboard	9
How to type numbers or symbols	9
How to type capital letters or punctuation symbols	9
How to switch between the Del and Backspace functions	10
How to switch between insert and overwrite modes	10
Hot-keys	10
How to lock the keyboard	10
How to turn your Cybiko Xtreme™ off	10
Sleep mode	10
How to get into Sleep mode	10
How to return to Active mode	10
MAIN DESKTOP	12
Game and application icons that are on your Cybiko Xtreme™ Main Desktop	12
Status icons that are on your Cybiko Xtreme™ Desktop	12
How to move through the Desktop	12
How to open a file or run an application	13
How to define Preferences	13
How to sort icons	13
How to perform additional actions (rename, delete icons, etc.)	13
How to view System Information	14
How to create a new Desktop section	14
How to create a shortcut for a file that is stored on your Cybiko Xtreme.	14
MULTI-TASKING	15
RECHARGING YOUR BATTERIES	16
AUTO SHUTDOWN	17
REGISTER ON-LINE	18
COMMUNICATIONS: ADULT CONTROL	19
WIRELESS LOCAL VIRTUAL COMMUNICATION	20
Chat	20
How to start	20
How to chat	20
Who gets the message	21
How will they know about my message	21
List of Favorite Phrases	21
Actions in the Message Log field	22
Ignore List	22
How to add a person into the Ignore List	22
How to remove someone from the Ignore List	22
How to view Ignore List	22
How to create a new chat room	22
How to exit Chat	22
Profiles	22
How to start	23

How to change parameters in <i>About You, About Me, B-card</i> fields	23
How to hide the information you entered	23
Sections description	23
Network.....	25
How to start.....	25
How to view the list of people	25
All People.....	25
Female / Male.....	25
Friend Finder.....	26
How to change sorting order in the list.....	26
How to display gender and age or hearts in the list.....	26
How to perform actions with a selected person	26
How to exit Network.....	26
GAMES.....	28
Games Desktop	28
PHAT Cash	28
Rules of the game.....	28
How to start the game	28
How to use the game menu	28
How to play.....	28
How to leave the game.....	29
BUSINESS AND PERSONAL APPLICATIONS	30
Date Book	30
How to Start	30
Tasks	30
How to switch between categories.....	30
How to create a new task or edit an existing one.....	30
How to use Reminder.....	31
How to create a new category or edit an existing one	31
How to move a task into another category.....	32
How to delete a task.....	32
How to perform additional actions on a task	32
How to perform additional actions on a category	32
Appointments.....	32
How to exit Date Book.....	34
Address Book.....	34
How to start.....	34
How to select a category	34
How to rename a category	35
How to create a new category.....	35
How to create a new record or edit an existing one.....	35
How to perform additional actions to a record	35
How to perform additional actions on a category	36
How to exit Address Book.....	36
File Manager	36
How to start.....	36
How to change disk/folder	36
How to open a file.....	37
How to create a new folder	37
How to copy a file.....	37
How to move a file.....	37
How to rename a file.....	37
How to delete a file	37
How to upload a file to another Cybiko computer.....	38

How to send a file by e-mail	38
How to share/unshare a file.....	38
How to create shortcuts.....	38
How to view file/folder/disk properties	38
How to sort the file list.....	38
How to filter the file list.....	38
How to format a card attached	39
How to view/change Preferences.....	39
How to view the system info from the File Manager	39
How to exit.....	39
System settings.....	39
How to start.....	39
How to change parameters.....	39
How to save changed parameters.....	39
How to restore default parameters	40
Parameter meanings	40
PC AND INTERNET CONNECTIVITY	42
EZ Loader	42
Cybiko Wireless Internet Gates	42
What is Cybiko Wireless Internet Gate.....	42
How to setup Virtual CyWIG on your Cybiko Xtreme™	42
APPENDIXES	43
APPENDIX I. CYBIKO XTREME™ MODEL CY44801	43
Hardware specifications.....	43
Software specifications	43
RF communication features	43
Other.....	43
Accessories included.....	43
System requirements	43
APPENDIX II. WARNING STATEMENTS.....	43
General precautions.....	43
Rechargeable NiMH battery warning	43
Important safety instructions.....	44
Important electrical considerations	44
The FCC wants you to know.....	44
APPENDIX III. WHAT TO DO IF YOUR CYBIKO XTREME™ DOES NOT WORK PROPERLY	45
The screen stays blank even though the power is ON	45
The device does not respond to pressing keys, but is supposed to	45
No sound	45
Your Cybiko Xtreme™ does not communicate with other Cybiko computers even at close distances	45
No vibration	45
Battery charge displayed is low, although I know my Cybiko Xtreme™ is charged	45
APPENDIX IV. WARRANTY AND SERVICE INFORMATION	45
Warranty Information	45
Exclusions and Limitations.....	46
Governing Law	46
Service After Expiration of Warranty.....	46
License Agreement	46
APPENDIX V. PATENT INFORMATION.....	47
APPENDIX VI. HOW TO CONTACT US.....	47

WHAT IS CYBIKO XTREME™?

Cybiko Xtreme™ is a wireless, high frequency RF communication computer! It's your direct digital connection to others like it, giving you the ability to reach others around you by E-mail or by Chat.

Cy-Sign

- ☪ This is the symbol to differentiate Cybiko computers from other handheld electronic devices.
- ☪ Under the <F1> brings you to the list of programs running on your Cybiko Xtreme.

CyID

CyID is your personal identification code. It's the seven bold-faced characters on the back of your Cybiko Xtreme following the ☪ (Cy-Sign). You will use your CyID to register your product and this is the beginning of your Cybiko E-mail address.

Sign up at www.cybiko.com today to get an E-mail account assigned to your CyID at no additional cost!

Cybiko Xtreme™ Capabilities

- Wirelessly communicate with other Cybiko computers using a high frequency RF transmission
- Chat wirelessly with up to 99 people simultaneously in your wireless local virtual network (*Chat*)
- Read and write your E-mail offline, hook up to a PC, and send global E-mails (*E-mail*)
- Find a friend or someone new in school, malls or at college campuses... virtually anywhere! (*Network*)
- Organize your time (*Date Book*)
- Enter phone numbers and addresses into the Address Book (*Address Book*)
- Use your Cybiko Xtreme as a Walkie-Talkie to communicate to others (*CyTalk*)
- Record sounds and voice clips (*CyRecord*)
- Play single player and wireless multi-player games (like *Blazing Boards 2*, *Pinball Pro*, and *PHAT Cash*.)

You can download additional games or applications from the Installation CD to customize your Cybiko Xtreme to what you want!

Buttons/elements you will need to know



ELEMENT	DESCRIPTION
Function buttons	Quick access to:
<F1>	Task menu for applications and games. Also allows switching between the active applications and games.
<F2>	Local virtual wireless chatrooms (<i>Chat.</i>)
<F3>	Personal data of your friends and family (<i>Address Book.</i>)
<F4>	Tasks and appointments (<i>Date Book.</i>)
<F5>	Recording/playback/speaking (<i>CyRecord / CyTalk.</i>) If you hold down <F5>, and you have <i>CyRecord</i> on your Cybiko Xtreme, recording to auto_record.wav will start automatically.
<F6>	Taking notes (<i>Notes.</i>)
<F7>	Basic calculator (<i>Calculator</i>), or Scientific Calculator (<i>Scientific Calculator 2</i>) – (if you have loaded it onto your Cybiko Xtreme.)
ELEMENT	DESCRIPTION
Keyboard buttons	
<On/Off>	Turns your Cybiko Xtreme On/Off when held for 2 seconds.
<Menu> or <Fn><Enter>	Opens the menu for a selected object (the context menu.)
	Deletes a character after the cursor if it works as Del (default functioning), or deletes a character before the cursor if it works as Backspace.
<Fn>	Toggles the function assigned to the button (it works either as Del or as Backspace.)
<Ins>	Toggles insert and overwrite modes in a text, or inserts a

	new item into a list.
<Tab>	Moves the cursor between fields.
<Select>	Changes field values or activates the selected item (often acts as <Enter>.)
<Enter>	Activates the selected icon or item.
<Esc>	Exits from an application/game, closes a menu, or moves a level up.
<?>	Provides instructions if you need help while in an application or game.
Direction arrows ←, →, ↑, and ↓	Move the cursor through the screens and lists.
ELEMENT	DESCRIPTION
Screen	LCD gray-scale screen.
Keyboard	QWERTY keyboard.
Cartridge slot	Expansion slot for adding the MP3 Player and future accessories.
USB port and cable	USB port and cable for connection to PC or wall outlet for charging the Cybiko Xtreme and downloading games and applications.
Reset button	Reboots your Cybiko Xtreme.
LED indicator	Shows your Cybiko Xtreme is operating.
Antenna	902 – 928 MHz RF antenna.
Speaker	Speaker for sound effects and music.
Microphone	Microphone for recording voice and sounds.
Adapter for a wall outlet	120V UL approved.

GET STARTED


Step 1: Check to make sure you have all necessary components

- Cybiko Xtreme™.
- USB Cable.
- USB Power Supply (120V.)
- Installation CD.
- PC which meets the following minimum system requirements:
 - 166MHz Pentium® processor.
 - Microsoft Windows® 98, 2000, or ME.
 - Mouse.
 - Available self-powered USB port.
 - Internet connection with Microsoft® Internet Explorer 5.0 or higher.
 - 64Mb RAM.
 - 35Mb of available Hard Drive space.
 - 4x CD-ROM Drive.
 - Recommended: 800x600 monitor resolution and 256 color depth.

Step 2: Run the installation CD on your PC

- Register on the Cybiko web site.
- Install EZ Loader – the program for loading games and applications onto your Cybiko Xtreme.

Step3: Turn on your Cybiko Xtreme™

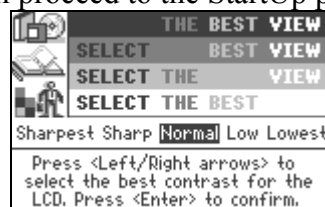
- Press the <On/Off> button . You will see the message: “Please connect your Cybiko Xtreme to USB cable connected to the USB power adapter plugged into the wall outlet to begin”. Charge your Cybiko Xtreme for: 1 hour – minimum, 5 hours – recommended. You can continue working with the Cybiko Xtreme while the batteries are being charged.

Note: If the battery charge is zero, the Cybiko Xtreme will not be able to be turned on. It will start working when connected to a power supply.

- Turn your Cybiko Xtreme on after you connect it to a power supply. You will see the following screen:



- Hit <Enter> to continue. You will proceed to the StartUp procedure.



- Select the LCD contrast by pressing <Left/Right arrows>. Press <Enter> when finished.
- Check the date and time. If the date and time are okay, then simply hit <Enter>. If you want to change the date or time, hit <Tab> to highlight the "Set" button, and then hit <Enter>. See the "System Settings" section to learn how to set time and date. Press <Esc> when you finish.



- Enter your name or nickname and hit <Enter>. “unknown” and “all” are not valid nicknames.



- Enter your gender (M for Male, F for Female.) Hit <Enter>.



- Enter your age. Hit <Enter>.

Note: If your age is 13 years or younger, the Communications: Adult Control procedure must be completed in order to chat and play games with other Cybiko Xtreme users. See the “Communications: Adult Control” section.



- To enter more info for other Cybiko computer users to see, or to change your current information, hit <Tab> to highlight the “OK” button, and then <Enter>. To enter more info at a later time, simply hit <Enter>. (Go to *Profiles* application on the Main Desktop to add or edit information at a later time).



- Wait while your Cybiko Xtreme loads.

Cybiko Xtreme™ keyboard

The Cybiko Xtreme has a QWERTY keyboard that is similar to a PC keyboard, only smaller. Most buttons like <Esc>, <Tab>, , <Ins>, <Enter>, and <Arrows> have familiar functions.

How to type numbers or symbols

To type a specific number/symbol, simultaneously press the <Fn> button and the button located below the desired number/symbol.

Note: To switch the Upper Register Lock on, press <Fn> and hold it 2-3 seconds, or press <Fn> twice quickly. To cancel, just press <Fn> again. In the Upper Register Lock mode you will see 123 in the top right corner of the Cybiko Xtreme screen (where applicable.)

How to type capital letters or punctuation symbols

Hold <Shift> and press a letter-button or a symbol-button.

Note: To switch the Caps Lock on, press <Shift> and hold it 2-3 seconds, or press <Shift> twice quickly. To cancel, just press <Shift> again. In the Caps Lock mode you will see ABC in the top right corner of the Cybiko Xtreme screen (where applicable.)

Note: You will notice that there is a symbol pictured on and above each button. The two bracket keys have only one sign shown on the button, but pressing <Shift><(> will produce the <'> sign and pressing <Shift><)> will produce the ☺ sign.

How to switch between the Del and Backspace functions

The button is dual functional – Del or Backspace. See the “System Settings” section to learn how to toggle function.

How to switch between insert and overwrite modes

Press <Ins> to switch between the insert and overwrite modes when typing a text.

Hot-keys

No matter what application you are using, you can use these key combinations on your Cybiko Xtreme for the following shortcuts:

KEY COMBINATION	ACTION
<Fn><F1>	Switches sound on/off
<Fn><F2>	Changes brightness on your Cybiko Xtreme
<Fn><F3>	Switches vibration on/off
<Fn><F4>	Switches alarm on/off
<Fn><F5>	Switches communication on/off
<Fn><F6>	Switches power saver on/off
<Fn><F7>	Shows the number of unread and unsent e-mail messages.

Note: You can also change all these settings in the System section of the Main Desktop. See the “System Settings” section to learn how to change system settings.

How to lock the keyboard

Hold down the <F1> button for 2 seconds. To unlock repeat the same operation.

How to turn your Cybiko Xtreme™ off

1. Press the <On/Off> button when your Cybiko Xtreme is on. You will see the menu with items *Turn Off*, *Silent*, and *Sleep*.
2. If you want to turn your Cybiko Xtreme off, select the *Turn Off* item by using <Up/Down arrows> and press <Enter> or continue to hold down the <On/Off> button. If you want to turn your Cybiko Xtreme back on, press <On/Off>, and you will notice you are back on the same screen as before you turned off your Cybiko Xtreme.

Sleep mode

When you are not using your Cybiko Xtreme, sleep mode saves power! If your Cybiko Xtreme is asleep it will still receive messages from others around it - and wake up if there is an urgent need to chat or play some games!

Your Cybiko Xtreme will automatically go into Sleep mode if it has not been used for 5 consecutive minutes and it does not find other active Cybiko computers within the communication range.

In Sleep mode:

- The screen is cleared.
- The Cybiko Xtreme sends and receives signals from your surrounding environment at a quarter of the frequency of the active mode.

Note: This mode allows you to save the battery charge. So, if you do not intend to use your Cybiko Xtreme without turning power off, we recommend putting it into the Sleep mode.

How to get into Sleep mode

Press <On/Off> and choose the *Sleep Mode* from the menu by using <Up/Down arrows>. Press <Enter>.

How to return to Active mode

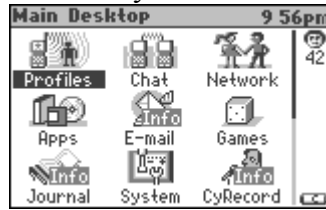
Cybiko Xtreme returns to the active mode from the Sleep mode if:

1. any key is pressed;
2. the Cybiko Xtreme is connected to USB port of a PC or to a wall outlet;
3. an invitation to chat or play a multi-player game is received.

When you come out of Sleep mode, you'll be able to go right back to the game or application you were using!

MAIN DESKTOP

After passing the StartUp procedure, you will find yourself on the Main Desktop:



Game and application icons that are on your Cybiko Xtreme™ Main Desktop

MAIN DESKTOP ICON	FUNCTION
Profiles	Setup personal information about yourself in this section. You can also setup a Profile for the type of person you would like to meet. If you are within a range of another Cybiko computer with a matching profile, your Cybiko Xtreme will alert you. See the “Alerts” part of the “System settings” section for details.
Chat	Gives you access to the wireless local virtual chat rooms.
Network	Lists people currently online within your wireless local virtual Network.
Apps	Loads the Applications Desktop.
Games	Loads the Games Desktop.
System	Customizes different settings on your Cybiko Xtreme - sound, vibration, alerts, screen contrast and brightness, units of measure and others.
Files	File Manager. Performs various operations with files on your Cybiko Xtreme.
Address	Address Book. Stores personal data about your friends and family.
Date Book	Creates tasks and appointments, and acts as a reminder.
Info icons	Icons with the “Info” word on them represent additional applications that you can get from the Installation CD.

Status icons that are on your Cybiko Xtreme™ Desktop

ICON	MEANING
	The number under this icon shows how many people are currently online.
	Communication is turned off.
	Strength of the link to a CyWIG™ (Cybiko Wireless Internet Gate) when you're in the coverage area.
	You have unread messages in your e-mail box.
	An e-mail message is being sent.
	Alarm is on.
	Sound is off.
	When a blinking “C” is present, the battery is charging.
	When the icon blinks, recharge your Cybiko Xtreme.
	Level of battery charge on your Cybiko Xtreme.
	When blinking, your Cybiko Xtreme is fully charged, but still plugged into the charging unit.
	Data transfer using the “fast link” procedure is being performed.
	A file is being transferred.

How to move through the Desktop

- Use <Arrows> to move through the icons.
- <Fn><Left/Right arrows> moves the selected icon left/right.

- <Fn><Up/Down arrows> moves one screen up/down.
- <Space> displays the full-screen clock. (Press <Esc> to get back to the Desktop.)
- Pressing a letter or a figure key cycles you through all shortcuts with names beginning with this character.
- When you are in the Applications or Games Desktop, press <Fn><Select> to switch between them.

How to open a file or run an application

1. Select a file/application that you want to open/run.
2. Press <Enter>.

How to define Preferences

1. Press <F1>. You will see the *task menu*.
2. Choose the *Preferences* item by using <Up/Down arrows> and press <Enter>. You will see the list of Preferences.
3. Choose the item you want to change by using <Up/Down arrows>. Press <Select> to change the value. Press <Enter> or <Up/Down arrows> to confirm the entered value or <Esc> to cancel it.

Item meanings:

Charge indicator – shows or hides the charge icon on the Desktop.

Sending mail icon – shows or hides the sending mail icon on the Desktop.

Wallpaper – chooses the wallpaper for the Desktop. To set a particular picture as a wallpaper, choose *Custom*, then press <Menu> or <Fn><Enter> in this line and choose the *Browse...* item. You will see the File Manager window. Choose a picture you want as a wallpaper and press <Enter> to set the wallpaper.

Note: you can select only a file in a Cybiko computer picture format “.pic” as a wallpaper.

Wallpaper mode – defines the wallpaper mode – either a single picture or the picture is repeated (tiled.)

Icon appearance – when you set a wallpaper (except *None*), you may change the way icons will be presented on the wallpaper – the icons can be either transparent or opaque.

Show long names – defines the way a selected icon name will be displayed: either full or the first line only.

Intro screens – turns on and off the intro-screens found at the beginning of the applications and games. Press <Esc> to exit Preferences.

How to sort icons

You can sort icons by:

- Name of the icon.
- Size of the corresponding file/folder.
- Type of file.
- Location (first icons of files/folders on the Disk, then files/folders on the attached card, if any.)

To sort the icons by the desired parameter:

1. Press <F1> to view the task list.
2. Using <Up/Down Arrows> choose the *Sort by...* item.
3. Press <Enter> and select the desired parameter by which the icons on the Main Desktop will be sorted.
4. Press <Enter>. You will see the re-sorted Main Desktop.

How to perform additional actions (rename, delete icons, etc.)

1. Select an icon.
2. Press <Menu> or <Fn><Enter>. You will see the pull-down menu with the list of additional actions on the selected icon.
3. Select an action by using <Up/Down arrows> and press <Enter>.

Possible actions are:

- *Rename Shortcut* – renames the selected icon.
- *Delete Shortcut* – deletes the selected icon.

Note: You cannot delete the icons of the System applications: Profiles, Network, Chat, System, Address Book, Date Book and Files. You cannot delete the Apps and Games sections.

Note: Deleting an icon does not delete the file/application itself. However, deleting a file/application causes its icon to be deleted automatically.

- *Cut Shortcut* – cuts the selected icon and places it into the clipboard.
- *Copy Shortcut* – copies the selected icon to the clipboard.
- *Paste Shortcut* – pastes an icon from the clipboard.
- *Upload...* – uploads the selected file/application to another Cybiko Xtreme user.
- *Mail to...* – sends the selected file/application via E-mail.
- *Mark Shared/Unshared* – makes a file/application shared/unshared for other Cybiko Xtreme users.

Note: to be able to download shared files from other Cybiko Xtremes, install the “Shared Content” application from the Installation CD.

- *Run* – runs an application or opens a file.
- *Find...* – carries out standard finding procedure: opens a line where you can type character(s). The next letter pressed moves you to an icon beginning with the same letter combination. Pressing <Enter> begins searching for a next icon with a name beginning with this character(s).
- *Properties...* – shows properties of the selected file/application.

How to view System Information

1. Press <F1> and choose the *Show System Info* item in the menu displayed.
2. You will see the System Information screen.
3. Press <Esc> to return back to the Main Desktop.

How to create a new Desktop section

1. Press <F1> and choose the *New section...* item in the menu displayed.
2. Type a name for the new section and press <Enter>.
3. You will find yourself inside the newly created section. Now you can create shortcuts for your favorite applications, games and files here.

How to create a shortcut for a file that is stored on your Cybiko Xtreme.

1. Run the File Manager application (*Files* icon.)
2. Select a file you want make a shortcut to.
3. Press <Menu> or <Fn><Enter> on this file.
4. Choose the *Create shortcut* item and press <Enter>.
5. You will find the newly created shortcut on the Main Desktop.
6. You can move the shortcut to another Desktop section by pressing <Menu> or <Fn><Enter> on it and selecting *Cut/Paste Shortcut*.

MULTI-TASKING

Multi-tasking on your Cybiko Xtreme allows you to open another application or game without closing the present game or application you are running.

To switch to another application, Press the <F1> button to view the list of all opened applications on your Cybiko Xtreme, select the application you want to switch to using <Up/Down arrows> and press <Enter> (this does not close other applications). There's yet another possibility to switch to another application - re-enter this application from the Desktop. In order to close a program, you need to switch to this program and exit it properly.

You can switch between programs at any time.

Note: You can also switch between opened applications and games by pressing <Fn><Tab>. A window with the name of the program will be displayed.

RECHARGING YOUR BATTERIES

With fully charged batteries your Cybiko Xtreme will last in average 3 hours 30 minutes in a very active mode (such as playing a multi-player arcade game), and 5 hours 30 minutes in a passive mode (while in the Desktop.) The most power-consuming operations are games, vibration alerts and RF transmission.

To recharge your batteries, plug the small end of the USB cable into the USB port found on the bottom of the Cybiko Xtreme and the other end into a self-powered USB port of a PC or into the wall outlet via the adapter.

If the battery charge is low, you will see the message: “Please connect your Cybiko Xtreme to USB cable connected to the USB power adapter plugged into the wall outlet to begin.” If the battery charge is zero, the Cybiko Xtreme will not be able to be turned on.

ATTENTION: The rechargeable batteries in your Cybiko Xtreme are not removable!

Note: For best results, charge overnight with your Cybiko Xtreme on! Do not leave your Cybiko Xtreme plugged into an outlet for more than 15 hours – it will reduce battery life. It requires 5 hours for full charging.

Note: If you will not be using your Cybiko Xtreme within the next several hours, it is recommended that you turn the power off.

Note: Use only self-powered USB ports to charge or transfer data to/from Cybiko Xtreme (examples: Monitor USB port, PC Root USB port.)

AUTO SHUTDOWN

If the battery charge is running low, you will see the message: "Please connect your Cybiko Xtreme to USB cable connected to the USB power adapter plugged into the wall outlet to begin."

When Auto Shutdown occurs, plug your Cybiko Xtreme™ into the charging unit. Then you will be able to continue using your Cybiko Xtreme at the time it is being charged.

Note: If Auto Shutdown occurs, we recommend to charge your Cybiko Xtreme even if you do not plan to continue working with it now. This will allow you to keep your data safe.

ATTENTION: If you do not begin charging your Cybiko Xtreme within 15 days of Auto Shutdown, all files and applications except System files and applications will be removed from your device. To guarantee the safety of your files, you can use the EZ Loader program to create a full backup of your Cybiko Xtreme disk on your PC. (See the "EZ Loader" section.)

REGISTER ON-LINE

When you buy a Cybiko Xtreme, we recommend that you register on-line at <http://www.cybiko.com>.

When you register you can:

- Update your system software.
- Participate in Cybiko events and promotions.
- Use your new Internet E-mail account.
- Subscribe for receiving new content from the Cybiko web site.
- Validate the purchase date for your 1-year Warranty.

COMMUNICATIONS: ADULT CONTROL

When you enter your age while passing the StartUp Wizard, if the age entered is below 13 years, you need parent or guardian permission to have the wireless communication turned on.

1. Having entered the age, you will see the screen saying that in order to chat and play multi-player games, you must ask your parent permission. For this, press the “OK” button (use <Tab> to move between the buttons.) If your parents are not available, press the “Cancel” button (in this case you will not be able to communicate wirelessly with other Cybiko computer users.)
2. If a parent is available, he/she can set permission to the wireless communication on your Cybiko Xtreme. Press <Enter> on the *Message for parents* screen.
3. Your parent must set the communication on or off. This setting is protected with a password – the parent should enter the password now. Use <Select> to change the value and <Enter> or <Arrows> to move between the lines.
4. If they set the communication to off, you won’t be able to communicate with others – to chat or play interactive games. If they set communication to on, you may continue the StartUp procedure. After this procedure is completed, you will be able to chat and play wireless games with other users.

Note: If your parent sets the communication to off, or if you didn’t complete the Adult Control procedure, the communication mode defaults to the *No Access* value in the System section of the Main Desktop.

When they set the communication to on, you may change it later (switch on/off) by yourself.

ATTENTION: If you would like to change the Adult Communication Control settings on your device, you need to set *StartUp Wizard: On* in the System section of the Main Desktop, exit this section in order to save the settings (or press <F1>, select *Save Settings* in the menu and press <Enter>), and press the Reset button on the left side of your Cybiko Xtreme. After this, you will be able to pass the StartUp procedure again.

WIRELESS LOCAL VIRTUAL COMMUNICATION

Chat

Do you want to chat with someone? Or maybe you have an instant message you want to send? No problem! You're automatically connected with up to 99 friends in your wireless local virtual network! You can broadcast a message to everyone, or share a quiet chat with a close friend! You can communicate when you are on a distance of 150 ft indoors and up to 500 ft outdoors (environment dependent), and the best result registered is 1000 ft!

How to start

Press the <F2> function button or choose the *Chat* icon on the *Main Desktop*.

You will see the main *Chat* screen – a list with two points:



Main – here you can choose a Cybiko chat room and chat with other Cybiko Xtreme users.

User Defined – here you can create a new room for chatting.

You can find the following Cybiko chat rooms: *General*, *Games*, *Music*, *Computing*, *Sports* and *Romance*.

You can also see the number of people in the room to the right from the room name. There are 2 numbers to the right from a room title – number of “visible” Cybiko computers in brackets and number of active people in the chatroom next to it.

To choose a room, select it using <Up/Down arrows> and press <Enter>.

You will see the *Chat* screen.

How to chat



1. Select a person with whom you want to chat and press <Enter>. (Press <Esc> to close the list of people and <Up/Down arrows> to open it).

Note: Pressing <Left/Right arrow> moves you from the beginning of the list to the end and back. Pressing <Fn><Up arrow> moves you one page up, pressing <Fn><Down arrow> – one page down.

Note: You can find a person in the list by pressing the alpha-numeric keys, which moves the focus to the next nickname beginning with this character (for example, pressing <A> will move you to a person whose nickname begins with A or a.)

In the list you will see:

- Bolded nicknames – people chatting in the same chatroom.
- Normal nicknames (not bolded) – all other people online.
- Gray nicknames – people in Sleep mode.
- Nicknames marked with ☒ – people who are not currently online, but are recorded to your Address Book. If you send a chat message to such person, he/she will receive it by e-mail later.
- An <update> item. After choosing <update>, your Cybiko Xtreme will re-collect information about all the people around. The renewed list of people around will be displayed.

You can now select a person to whom you want to send a message.

2. Use <Tab> to switch between the following three fields on the Chat Screen:
 - Message field (lower right corner.)

- Outgoing Address field (lower left corner.)
- Message Log field (the largest part of the screen.)

Your Message Log displays:

- Incoming messages.
- Delivered outgoing messages – marked with a black triangle ▶.
- Undelivered outgoing messages – marked with a white triangle ◀.

Note: If the message is marked this way, this means your Cybiko Xtreme did not receive the delivery confirmation message, but there is a chance that the message was delivered nevertheless.

- Outgoing messages in process – marked with a blinking triangle.
3. Type your message in the Message field using alpha-numeric keys and press <Enter>. The message will be sent to the selected person(s).

Who gets the message

There are two types of messages:

1. If "*all*" is specified in the Outgoing Address field, all online people receive your message. This is called a *broadcast* message.
2. If a *specific nickname* is selected from the list of people around, only that person receives your message. This is called a *private* message.

How will they know about my message

For *broadcast* messages:

- When you send a *broadcast* message to users within your chatroom then they will see it in the Message Log field (when this happens, the sound alert and vibration will also occur.)
- When you send a *broadcast* message to users not in your chatroom or not in the *Chat* application, they will not receive your message.

For *private* messages:

- When you send a *private* message to a user within your chatroom, he/she will see it in the Message Log field (when this happens, the sound alert and vibration will also occur.)
- When you send a *private* message to a user not in your room, but in another room or even another application, he/she will see a dialog box saying that there is a chat message for him/her (with sound and vibration alerts.)
- When you send a message to a person that is not in the *Chat* application, he/she will see a dialog box saying that there is a chat message for him/her (with sound and vibration alerts.)

Your Cybiko Xtreme will make several attempts to deliver *private* messages. Undelivered messages are indicated by a white triangle ▶ in the Message Log.

Note: If the message is marked this way, this means your Cybiko Xtreme did not receive the delivery confirmation message, but there is a chance that the message was delivered nevertheless.

Note: The reliability of message delivery depends upon the environment and the distance between you and the recipient. Message delivery is not guaranteed; however, you're notified about undelivered messages.

Note: You may choose a type of signal – sound and/or vibration – that will inform you about the new chat message. See the “System Settings” section for details.

List of Favorite Phrases

How to add a message to the List of Favorite Phrases

- Type the phrase in the Message field.
- Press <Menu> or <Fn><Enter>.
- Choose the *Add to Favorites* item and press <Enter>. The message will be added to the list of your favorite phrases.
- An alternate/easier way to add favorites is to press <Ins> after typing the phrase.

How to select a phrase from your List of Favorite Phrases

- Press <Up Arrow> from the Message field to open the List of Favorite messages.
- Select the message using <Up/Down Arrows>. (Or press <Esc> to cancel this screen.)

- Press <Enter>. The selected message will appear in the Message field and is ready to be sent.

How to delete a phrase from your List of Favorite Phrases

1. Press <Up Arrow> from the Message field to open the List of Favorite messages.
2. Select the phrase.
3. Press .

Actions in the Message Log field

1. Use <Up/Down Arrows> to scroll through the messages in the Message Log field.
2. While in the Message Log field, you can press <Enter> to display the nickname of the sender/receiver of the selected message in the Outgoing Address field.
3. Press <Esc> to exit the chatroom.

Ignore List

You can put any person in your Ignore List – which means that now you will not receive any chat messages from them.

How to add a person into the Ignore List

1. Press <Tab> to go to the Message Log field. Use <Up/Down arrows> to scroll through the messages.
2. Position the cursor on a message written by a person you want to ignore.
3. Press <Menu> or <Fn><Enter>.
4. Select *Ignore <nickname>* item from the menu displayed and press <Enter>.

Note: When you block *all* (The corresponding menu item is called *Ignore Broadcast*), you will not receive any broadcast messages.

How to remove someone from the Ignore List

1. Press <Tab> to go to the Message Log field. Use <Up/Down Arrows> to scroll through the messages.
2. If you want to unblock a particular person, position cursor on one of his/her messages.
3. Press <Menu> or <Fn><Enter>.
4. Select *Cancel Ignore<nickname>* item from the menu displayed and press <Enter>.

How to view Ignore List

1. Press <Menu> or <Fn><Enter> in the Message Log field.
2. Choose the *Ignore List...* item and press <Enter>. You will see the Ignore List.
3. You can delete a person from it pressing .
4. <Esc> exits the Ignore List.

How to create a new chat room

1. Choose the *User Defined* item on the main *Chat* screen and press <Enter>.
2. Press <Enter> on the *Create Room* line.
3. Enter a name for a new room.

When you create a new room, all other users will see it in the *User defined* sections on their Cybiko Xtremes in some time. In order to let them know about the new room immediately, send a broadcast message within this room.

A user room automatically vanishes if there are no users in it.

You can operate in the new created room in a usual way as described above for chatrooms from the *Main* section.

How to exit Chat

1. Press <F1>.
2. Choose the Exit item using <Up/Down arrows>.
3. Press <Enter>.

Note: You can also close Chat by pressing <Esc> on its main screen.

Profiles

In the *Profiles* section, you can enter information about yourself and specify the parameters of a person you want to meet. Your Cybiko Xtreme is constantly scanning the wireless local virtual network in search for a match. If a current, or possibly new, friend is near, your Cybiko Xtreme will alert you with a beep, vibration or a dialog box (see more about alert types in the “System Settings” section.)

How to start

Choose *Profiles* icon on the Main Desktop and press <Enter>. You will see the main menu (see Fig.1.)

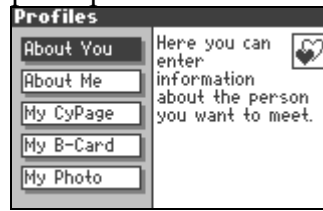


Figure 1. The main menu.

Use <Up/Down arrows> to move through the lines. Press <Enter> to open the selected section. To switch to the next section, press <Fn><Select>.

How to change parameters in *About You, About Me, B-card* fields

1. Position the cursor on the item you want to change by using <Up/Down arrows>.
2. As soon as the item is selected, it can be changed. No additional <Enter> or <Select> presses are required. Use <Select> to change the value of the item or type in a new value. If there are a few possible values, pressing <Menu> or <Fn><Enter> opens the list of them. Select one and press <Enter>.
3. Press <Enter> or <Tab> to confirm the change you made or <Esc> to cancel it.

How to hide the information you entered

It's up to you to decide if you want to display your personal information for others to view. You can make each parameter invisible (except for your CyID, gender and nickname.)

1. Position the cursor on the line you want to hide.
2. Press <Tab> to move to the rightmost field.
3. Use <Select> or <Left/Right arrows> to change the icon.



This icon means this line is visible to others.



This icon means this line is invisible to others.

4. Press <Enter> when you are finished.

Sections description

About You

Here you can enter parameters of person you want to meet. Your Cybiko Xtreme is constantly scanning the wireless local virtual network in search for a match. The parameters you enter in "About You" and "About Me" sections will be compared during the search. The comparison results are displayed in the *Network* section of the Main Desktop.

You can prioritize the parameters of a person you want to meet.

The icon to the right of a parameter displays the priority of this parameter.

To prioritize parameters in your search for a match, select one of the icons listed below for each parameter by doing the following:

1. Position the cursor on the parameter.
2. Press <Tab> to move to the rightmost field.
3. Use <Select> or <Left/Right arrows> to change the priority. As you change priorities, the corresponding icons will be displayed in the rightmost field.
4. Press <Enter> when you are finished.

Priority icons:

ICON	MEANING
	This feature is highly desirable
	This feature is desirable
	This feature does not really matter. Any value will be OK
	This feature is undesirable
	This feature is highly undesirable

Purpose – their purpose. You can choose between *Business, Romance, Sports, Chat, and Other*.

You are – their gender – *male* or *female*.

Friends – here you can specify your friends (enter their CyIDs in this field, use semicolons or spaces for separation.) Your Cybiko Xtreme will alert you every time any of your friends are near.

Ignore – here you can specify persons you don't want to communicate with (enter their CyIDs in this field, use semicolons or spaces for separation.)

Age, Height, Weight – here you can enter the admissible range of these parameters for the person you want to meet.

Hobby – their hobby. Press <Select> to move through possible values.

Note: you can specify 3 different hobbies.

Secret field - The *secret field* is used to find a specific group of people. Your Cybiko Xtreme will alert you when a member with the same word in the *secret field* appears in your wireless local virtual network. For example, a phrase such as "Chicago Junior School" could be abbreviated to "CJS" in the Secret Field.

Note: You can enter up to eight characters in each of three secret fields (so you can have three different groups.)

About Me

Here you can enter information about yourself.

Purpose – the purpose you want to meet people for. You can choose between *Business*, *Romance*, *Sports*, *Chat*, and *Other*.

My nickname – the nickname others can identify you by.

I am - set your gender here – *male* or *female*.

Birthday – you can enter your birthday here.

Note: if you make your birthday invisible, others are still able to see your approximate age. They will see one of the following letters instead of the exact age while viewing your profile:

A = under 13 years old.

B = 14-17 years old.

C = 18-29 years old.

D = 30 years and older.

Height – your height.

Weight – your weight.

While entering height and weight, you can choose between US measurement units (feet, ounces) and European measurement units (meters, kilograms) – see the "System Settings" section for details.

Hobby – select your hobby here. Press <Select> to move through possible values.

Note: you can specify 3 different hobbies.

Secret field - The *secret field* is used to find a specific group of people. Your Cybiko Xtreme will alert you when a member with the same word in the *secret field* appears in your wireless local virtual network. For example, a phrase such as "Chicago Junior School" could be abbreviated to "CJS" in the Secret Field.

Note: You can enter up to eight characters in each of three secret fields (so you can have three different groups.)

My CyPage

You can type information about yourself and other Cybiko computer owners will be able to see it. We recommend not writing anything too personal...

My B-card

You can display information about yourself such as your name, phone, e-mail, and address, on your Business Card. You can make some parameters invisible for other Cybiko computer users:

1. Position the cursor on the line you want to hide.
2. Press <Tab> to move to the rightmost field.
3. Use <Select> or <Left/Right arrows> to change the icon.



This icon means this line is visible to others.



This icon means this line is invisible to others.

Press <Enter> when you are finished.

My Photo

You can have your photo on your Cybiko Xtreme. In this section, you can view this photo.

How to create your photo:

1. Take your photo with a digital camera or scan one and save it on your PC.
2. Launch Cybiko Converter (this program is downloadable from the Installation CD or from www.cybiko.com.)
3. Open the graphics file with your photo and adjust it as desired (see Cybiko Converter Help for instructions.)
4. Save the resulting file as "myphoto.pic".

Note: if you save the file in the 16-color ".xpic" format, this file will not be recognized as your photo.

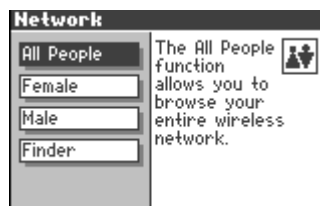
5. Use EZLoader to send this file to your Cybiko Xtreme.

Network

The *Network* application allows you to browse your entire wireless local virtual network. It provides you with a list of all online Cybiko Xtreme users around you.

How to start

Choose the *Network* icon on the Main Desktop using <Arrows> and press <Enter>. The main Network menu will appear.



From the main menu, you can access one of four pages:

All People - shows you all of the Cybiko computers in your wireless local virtual network.

Female – shows you all of the girls around.

Male – shows you all of the boys around.

Finder – here you can see the list of people who are compatible with you based on the data that you specified in the *Profiles* application.

How to view the list of people

1. Use <Up/Down arrows> to move through the main menu.
2. Choose one of menu items and press <Enter>. The selected list of people will be displayed.

All People		
rektor	male	19
NEO	male	22
DunkanII	male	27
Sergey	male	B
Kolya	male	B
WwCettq	male	B
test15	male	C
test1	male	C

3. Press <Esc> to move back to the main menu.

Note: Pressing <Left/Right arrow> moves you from the beginning of the list to the end and back.

Pressing <Fn><Up arrow> moves you one page up, pressing <Fn><Down arrow> – one page down.

Note: You can find a person in the list by pressing the alpha-numeric keys, which moves the focus to the next nickname beginning with this character (for example, pressing <A> will move you to a person whose nickname begins with A or a.)

All People

The *All People* function allows you to browse your entire wireless local virtual network. If a person hides his/her exact age, you will see one of the following letters - A, B, C or D - instead of the age (A – under 13 years old, B – 14-17 years old, C – 18-29 years old, D – 30 years and older.)

Female / Male

A list of all girls/boys in your wireless local virtual Network is sorted by their degree of matching the parameters you specified in the *About You* section of *Profiles*.

Friend Finder

Friend Finder allows you to view a list of Cybiko computer users who are compatible with you based on the information you specified in the *Profiles* section of the Main Desktop. The list is sorted by their degree of compatibility with you.

The number of hearts ♥ on the right side of a nickname corresponds to your combined compatibility. If both of you are highly compatible, three hearts appear on the right side of his/her nickname. For this feature to work effectively, both you and your Cy-friend must fill all fields in the *About Me* section of *Profiles*. Your Cybiko Xtreme will compute your combined compatibility. If the number of hearts is zero, that person is not in the *Friend Finder* list.

How to change sorting order in the list

You may change the parameter by which a person list is sorted. You can select one of the three sorting ways: number of hearts, name or age.

1. Press <Menu> or <Fn><Enter> in the list and choose the *Sort by...* item.
2. Press <Enter>. You will see the list with three items: Name, Age and Hearts.
3. Select an item using <Up/Down arrows> and press <Enter>. The list will be re-sorted by the selected parameter.

Note: When you sort by Hearts, you will see hearts in the right field of the list. When you sort by Age, you will see age and gender in the right field.

Note: There is a difference between hearts in *Friend Finder* and hearts in *All People, Male, Female* sections. In the first case, they check the combined compatibility (i.e. two-sided) and in other cases matching the parameters you specified in the *About You* section of *Profiles* is checked.

How to display gender and age or hearts in the list

You may choose which information is shown for one selected person without changing the sorting order of the whole list.

1. Select a person by using <Up/Down arrows>.
2. Press <Select> any time when you want to change the parameter to be displayed at the right field – gender and age or hearts.

How to perform actions with a selected person

Choose a person from the any list and press <Enter>.

You will see a list of actions available for this person:



Chat - choose it to chat with him/her.

View CyPage – shows his/her CyPage.

View Profile – views the profile that he/she has created in *About Me* section of *Profiles*.

View Business Card – views his/her Business Card.

View Photo – displays his/her photo.

Add to Address Book – adds information about this person to your Address Book.

Send My Business Card – uploads your business card to his/her Cybiko computer.

Add to Friend List – adds him/her to your Friend List – this means that when he/she appears in the wireless local virtual network, you will be informed about it.

Delete from Friend List – deletes him/her from the Friend List.

Add to Ignore List – adds him/her to the Ignore List – from now you will not receive chat messages from this person.

Delete from Ignore List – deletes him/her from the Ignore List.

Note: You can view the Friend List and Ignore List in the *Profiles* section of the Main Desktop.

How to exit Network

1. Press the <F1> button.
2. Choose the “Exit” item using <Up/Down arrows>.

3. Press <Enter>.

Note: You can also close the application by pressing <Esc> in the main Network menu.

GAMES

Games Desktop

To display the Games Desktop, select the *Games* icon on the Main Desktop. The Games Desktop will look like this:



You can download additional games from the Installation CD.

PHAT Cash

Money, money and more MONEY! Everybody loves money. Welcome to the fast-paced world of high finance. It takes brilliant planning, quick thinking and nerves of steel to survive in the stock market. Do you have the discipline to know when you've got enough? Is it time to sell, or should you hold on and push for more? Plan your moves. Sell the small groups to set-up *the big sale*. Any way you get it, our cash is PHAT Cash... Pretty, Hot And Tempting.

Rules of the game

Become a MILLIONAIRE in this single player game. Your goal is to sell (remove) your entire stock portfolio by linking them together before time runs out.

The four types of stocks are represented as solid shaded squares: black, white, dark gray and light gray. To sell, you must have two or more of the same stocks linked together horizontally and/or vertically. Place your cursor on one of the linked stocks and sell (remove) them. Hurry up! You only have 2:45 to finish the level. When the stocks are removed, the objects above fill the empty space. A Stockbroker stands on the top of each column. If you sell all stocks from a column, the Broker gives you a commission. If you sell 80% of your stocks on the first level, you earn a bonus level. If you sell 90% of your stocks on the second level, you earn a final bonus level. Sell 100% on any level to win an instant million. If you do it before the time expires, you'll get bonus points for the saved time.

The game ends:

- After completing the third level.
- If the target percentage was not reached and no more moves are available on the level.
- If the time runs out.

How to start the game

Open the Games Desktop and choose the *PHAT Cash* icon. The *PHAT Cash* intro screen will appear. Press any key if you want to skip over the intro screen. You'll go to the game menu.

How to use the game menu

Use <Up/Down arrows> to choose an option.

Press <Enter> to run it.

Select "Start Game" to start the game.

Select "High scores" to view the Top 8 scores.

Select "Exit Game" to exit the game.

Press <Menu> or <Fn><Enter> to open the context menu.

Press <F1> to open the task menu.

How to play

This game screen shows you the playing field and some important information (see Fig.1):

- The \$ cash you earn for sold stocks in the upper right corner of the screen.
- The game timer in the upper left corner of the screen.

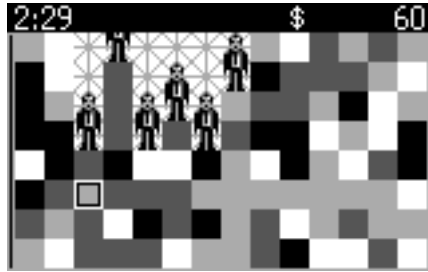


Figure1. PHAT Cash game screen

How to sell the stocks

Use <Arrows> to move the cursor.

Move your cursor over 2 or more squares of the same color linked together horizontally or vertically and press <Enter> to highlight the linked group. Press <Enter> again to remove the linked group.

Hold <Select> to view the percentage of sold stocks.

When the level is over, press any key to continue playing or to exit the game.

Press <Menu> or <Fn><Enter> to open the context menu.

Press <F1> to open the task menu.

Press <Esc> to exit or restart the game.

Context Menu

If you press <Menu> or <Fn><Enter> during the game, you will see the context menu.

It contains the item “Exit”.

To exit, press <Enter> or <Select>.

Press <Esc> to close the context menu.

If you win the bonus level

If you sell 80% of the stocks on the first level, you earn a bonus level. A message appears when there are no more moves remaining on the level. You’ll see the percent of stocks sold and get notified if you sold enough to earn that bonus level. On the second level, you have to sell 90% of the stocks to continue playing. If you succeed, you’ll earn the third and *final* level. The game ends if you don’t sell the percentage quota of stocks on the first or second level.

The end of the game

The game can end in three ways:

- When there are no more moves on the third level.
- If there are no more moves and the percentage is less than the target.
- If time runs out before the target percentage is removed. You’ll see your score. If your score is in the Top 8, you are offered to enter your name.

How to leave the game

If you want exit the game, you can:

- Press <Menu> or <Fn><Enter> to open the context menu and select “Exit” option.
- Press <Esc> while playing to go to the main menu. Select “Exit” in the menu to exit the game.

BUSINESS AND PERSONAL APPLICATIONS

The following applications are resident on your Cybiko Xtreme:

- Address Book.
- Date Book.
- File Manager.
- System.

Additionally, you can choose the *Apps* icon on the Main Desktop to display the Applications Desktop with other applications. (You can download additional applications from the Installation CD.)

Date Book

The Date Book stores and reminds you of tasks and appointments that you've scheduled on certain dates and times and thus allows you to stay you on time.

How to Start

Press the <F4> function button or choose the *Date Book* icon on the Main Desktop and press <Enter>. You'll see the Date Book main screen (see Fig. 1.)



Figure 1. Date Book main screen

Tasks - here you can view your tasks, create new ones, and set reminders for them.

Daily – shows you scheduled appointments for a day and allows you to schedule a new appointment.

Weekly – shows you scheduled appointments for a whole week.

Monthly – shows you scheduled appointments for a whole month.

To choose a menu item, use <Up/Down arrows> and press <Enter>. To exit an opened item, press <Esc>.

Tasks

In this section you can create and store tasks. Tasks are stored in different categories. There are prescribed categories (such as *All*, *Personal*, *Business*) in your Date Book, and you can also create your own category. By choosing the *Tasks* item in the main menu, you will find yourself in the list of tasks in the category *All*:

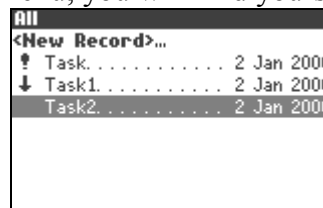


Figure 2. The list of tasks

Tasks are sorted according to their *due date* (from the earliest to the latest) and priority (from the highest to the lowest.) High-priority items are marked with ↑, medium-priority items are unmarked, low-priority items are marked with ↓. A date at the right side is a Due Date. Near this date, the reminder icon also may be shown.

Use < Up/Down arrows> to move through the records.

Press <Esc> to move to the main screen.

How to switch between categories

Press <Fn><Select> to switch between categories.

How to create a new task or edit an existing one

1. Choose <New Record>... to create a new task, or choose an existing record from the list in any category and press <Enter>. You will see the task parameters (see Fig. 3.)

Edit Record	
Priority	Medium
Due date	2 Jan 2000
Reminder, date	No date
time	No time
Subject	
Category	None

Figure 3. Task Edit Sheet

Note: Creating a new task will cause the task to be created in the category where you selected the <New Record>... item. You can easily change the category at a later time.

<Up/Down arrows> move you through the lines.

2. Enter the parameters of the task:

Priority – press <Select> or <Left/Right Arrows> to change the prescribed values of the Priority: *High*, *Low* or *Medium*.

Due Date – the finish date for this task.

Reminder, date and *Reminder, time* – date and time for the reminder.


Subject – use the alpha-numeric keys to type the task itself here.

Category - use <Select> to move through the existing categories.

No additional keypress is needed – the item is editable as soon as it is selected. Press <Enter> or <Up/Down arrows> to accept the changes or <Esc> to reject them.

Instead of manually entering the parameters, you can choose some of them (*Priority* and *Category*) from the list of prescribed values. To see this list, press <Menu> or <Fn><Enter> on the desired field. Use <Up/Down arrows> to choose the value and press <Enter>. The selected value will be displayed in the value field of the parameter.

3. If you want to enter an additional note for this task, press <Menu> or <Fn><Enter> and select *Note*, then select *Add Note*. Type the note using alpha-numeric keys. Press <Esc> when you are finished.

If you want to delete the note, press <Menu> or <Fn><Enter> and select *Note*, then select *Delete Note*. If there is a note attached to this task, you will see this icon in the upper left corner of the task screen: .

4. Press <Esc> to save and exit this screen.

How to use Reminder

When you turn the Reminder on (i.e. input *Reminder, date* and *Reminder, time*), it means that wherever you are in any game or application, you will see a dialog box reminding you about this task at the exact day and time that you have set (see Fig.4):



Figure 4. Reminder screen.

Press “Dismiss” or <Esc>, and there won’t be any future reminders. Press “Snooze” in order to see the same dialog box 2 minutes later

Use <Tab> to switch between the buttons.

When you turn the Reminder off (i.e. give the *No date/No time* value), you will receive no reminder of this task in the future.

Note: The *Reminder* fields are case-sensitive.

Note: Reminder works according to the time set on your Cybiko Xtreme. Check to make sure that your time is correct.

How to create a new category or edit an existing one

1. Press <Menu> or <Fn><Enter> in the list of records.

2. Choose the *Edit Categories* item by using <Up/Down arrows>.

3. Press <Enter>. You will see the <New Category>... item and the list of existing categories.

- To create a new category, choose the <New Category>... item and enter the new category name. Then press “OK” to accept the new name or “Cancel” to cancel it. (Use <Tab> to switch between the buttons.)
- To edit the existing category, select the category and press <Enter>. Enter a new name for the category. Press <Enter> to accept the new name or <Esc> to cancel it.

How to move a task into another category

Open the task and choose another category as described above.

How to delete a task

- Position the cursor on the task that you want to delete.
- Press .

How to perform additional actions on a task

Position the cursor on the task in the list (any category) and press <Menu> or <Fn><Enter>. You will see a list with the following actions:

Select Category... – opens the list of tasks belonging to another category.

Edit Categories – opens the list of categories for editing.

New Record... (also on <Ins>) – creates a new task in this category.

Cut Record - cuts the task and stores it in the clipboard.

Copy Record – copies the task to the clipboard.

Paste Record – pastes the task from the clipboard.

Edit Record - (also on <Enter>) – opens the existing task for editing.

Delete Record (also on Del) – deletes the task.

Delete All Records– deletes all tasks.

Send Record to... – sends the task to another Cybiko computer user.

Use <Up/Down Arrows> to move through the list and press <Enter> to execute the selected action.

How to perform additional actions on a category

Open the Edit Categories Screen (see above) and press <Menu>. You will see the list of following actions:

New Category (also on <Ins>) – creates a new category.

Rename Category (also on <Enter>) – renames the selected category.

Delete Category (also on) – deletes a category and moves all its records to the *NONE* category.

Delete All Categories – deletes all categories.

Appointments

Daily appointments

In the *Daily* section you can create and store appointments. You can also set the reminder that will remind you of a forthcoming event and thus keeps you on time.

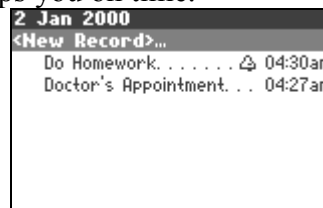


Figure 5. Daily screen

Weekly and *Monthly* items have the same functions for editing; the only difference is the time period.

How to create a new appointment or edit the existing one

- Choose <New Record>... to create a new appointment or choose an existing record for editing and press <Enter>. You’ll see the screen of appointment editing (see Fig. 6).

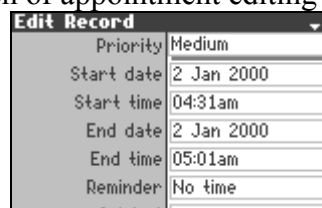


Figure 6. Editing an appointment

<Tab> or <Enter> moves you through the lines.

2. Enter the parameters of the appointment:

Priority – <Select> or <Left/Right arrows> change the prescribed values of the Priority: High, Low or Medium.

Start date – the start date for this appointment.

Start time - the start time for this appointment.

End date - the end date for this appointment.

End time - the end time for this appointment.

Reminder –type a value using the alpha-numeric keys. Use the same format as in the following examples: *5 min*, *5 hours*, *5 days*, *5 weeks*, or *No time*.

Note: The *Reminder* field is case-sensitive.

Subject – use the alpha-numeric keys to type the appointment itself here.

No additional keypress is needed – the item is editable as soon as it is selected. Press <Enter> or <Up/Down arrows> to accept the changes or <Esc> to reject them.

Instead of manually entering the parameters, you can choose *Priority* from a list of prescribed values.

To see this list, press <Menu> or <Fn><Enter> on the selected parameter. Use <Up/Down arrows> to choose the value and press <Enter>. The selected value will be displayed in the value field of the parameter.

3. Press <Esc> to save and exit this screen.

How to use reminder

The reminder is set for a time - it means that the following dialog box will appear the X time before the Start Time.



Figure 7. Appointment reminder

Note: If your Cybiko Xtreme is off at the reminder time, it will turn on to inform you about the scheduled event. If your Cybiko computer is in the Silent mode, you will hear the sound alert nevertheless.

1. Press “Dismiss” or <Esc> and there won’t be any future reminders.

2. Press “Snooze” in order to see the same dialog box in 2 minutes.

Use <Tab> to switch between the buttons.

When you turn the *Reminder* off for a task, you will receive no reminder of this task in the future.

Note: Reminder works according to the time set on your Cybiko Xtreme. Check that this time is correct.

How to delete an appointment

1. Position a cursor on an appointment that you want to delete.

2. Press .

How to perform additional actions on an appointment

Position the cursor on the task in the list (any category) and press <Menu> or <Fn><Enter>. You will see a list with the following actions:

New Record... (also on <Ins>) – creates a new appointment.

Cut Record - cuts the appointment and stores it in the clipboard.

Copy Record – copies the appointment to the clipboard.

Paste Record – pastes the appointment from the clipboard.

Edit Record - (also on <Enter>) – opens the existing appointment for editing.

Delete Record (also on Del) – deletes the appointment.

Delete All Records– deletes all appointments.

Send Record to... – sends the appointment to another Cybiko computer user.

Use <Up/Down Arrows> to move through the list and press <Enter> to execute the selected action.

Weekly and Monthly appointments

These two screens show the same appointments as in *Daily* but in the different view.

2 Jan 2000 - 8 Jan 2000		Su	Mo	Tu	We	Th	Fr	Sa
12am-7am								
7am-10am								
10am-2pm								
2pm-6pm								
6pm-12am								

Figure 8. Weekly screen

January 2000		Su	Mo	Tu	We	Th	Fr	Sa
26	27	28	29	30	31	1		
2	3	4	5	6	7	8		
9	10	11	12	13	14	15		
16	17	18	19	20	21	22		
23	24	25	26	27	28	29		
30	31	1	2	3	4	5		

Figure 9. Monthly screen

In the case that there are tasks during the respective period, the corresponding square will be colored black (see Fig.8 and Fig.9.) Sunday and Saturday squares are colored gray.

Use <Arrows> to move through the *Weekly* and *Monthly* screens.

How to view appointments scheduled for a certain period of time

1. Choose the square indicating this time period using <Arrows>.
2. Press <Enter>. You will see the *Daily* screen for the selected time date.

Note: Having opened the list of appointments for a day – the *Daily* screen – you can perform the actions described above: create a new appointment, edit the existing one, and others.

How to create an appointment on a day

1. Choose a date using <Arrows>.
2. Press <Enter>. You will see the *Daily* screen for the selected date.
3. Select the “<New record...>” item and press <Enter>, or press <Menu> to bring on the context menu and select the “New Record...” item there.
4. Create a new appointment as described above in the *Daily* section.

How to exit Date Book

1. Press the <F1> button.
2. Choose the “Exit” item using <Up/Down arrows>.
3. Press <Enter>.

Note: You can also close the application by pressing <Esc> in the main screen.

Address Book

This application allows you to store the phone numbers, mailing addresses, e-mail addresses, and other information about your friends. You can also send e-mail messages to your friends by selecting their e-mail address here, accept their business cards to your *Address Book*, and upload your business card to their *Address Books*.

How to start

Choose the *Address* icon on the Main Desktop and press <Enter>. You will see the *Address Book* main screen (see Fig.1.)

All	
<New Record>...	
Dahir.	H 123-45-67
Julia.	

Figure 1. Address Book main screen

This is a list of previously created records in the *All* category. The <New Record>... item is for creating a new record in this category.

How to select a category

There are set categories for records in the Address Book: *Business*, *Home* and *Personal*, and also the *All* category that contains all records.

1. Press <Menu> or <Fn><Enter>. You will see the context menu.
2. Using <Up/Down arrows>, choose the *Select Category* item.
3. Press <Enter>. You will see the list of existing categories.

4. Select a category and press <Enter>. You will see the list of records belonging to this category.

Note: You can also press <Fn><Select> to switch between the categories in order.

How to rename a category

1. Press <Menu> or <Fn><Enter>.
2. Select the *Edit Categories* item.
3. Using <Up/Down arrows>, choose the category to rename.
4. Press <Menu> or <Fn><Enter> again and choose the *Rename Category* item or just press <Enter> and enter a new category name.

How to create a new category

1. Press <Menu> or <Fn><Enter>.
2. Choose the *Edit Categories* item and press <Enter>. You will see the list of categories and the item <New Category>...
3. Press <Enter> on the item <New Category>... and enter a new category name. (Use <Tab> to switch between buttons and the text-editing field in the box for entering the new category name.)
4. Press the "OK" button.

Note: You can also create a new category by pressing <Ins> in the list of categories.

How to create a new record or edit an existing one

1. Choose the <New Record>... item with <Up/Down arrows> and press <Enter> to create a new record, or press <Enter> on an existing record to edit it. You will see the record editing screen (see Fig.2.)

Damir		ABC
Nickname	Damir	
CyID	AAD6EUB	
First name	Damir	
Last name		
Home	123-45-67	
Mobile		

Figure 2. Record editing screen

Note: You can also create a new record by pressing <Ins>.

Use <Up/Down arrows> to move through the items: *Nickname, CyID, First name, Last name, Home, Mobile, E-mail, AIM, ICQ, Work, Fax, Pager, Other, Address, City, State/Zone, Zip code, Country, Birthday* and *Category* (it is the category the record belongs to.)

2. Use the alpha-numeric keys to enter values. In order to set a category, press <Menu> in the *Category* field. You will see the list of categories existing on your Cybiko Xtreme. Choose a category by pressing <Up/Down arrows>. Press <Enter> to select this category. You can also press <Select> or <Left/Right arrows> here to cycle through the existing categories.

How to perform additional actions to a record

1. Choose a record in the list and press <Menu> or <Fn><Enter>. You will see the list of possible actions:

Select Category – shows the list of records belonging to a certain category.

Edit Categories – shows the list of categories.

New Record...(also on <Ins>) – creates a new record.

Cut Record – cuts the selected record and saves it to the clipboard.

Copy Record – copies the selected record to the clipboard.

Paste Record – pastes the selected record from the clipboard.

Edit Record (also on <Enter>) – opens the selected record for viewing/editing.

Delete Record (also on Del) – deletes the selected record.

Delete All Records – deletes all records from this category.

Send record to... – sends a record to another Cybiko Xtreme user.

Get B-Card from... – gets a business card from the selected person.

Send B-Card to... – sends your business card to the selected person.

Send E-mail to... – creates a new e-mail message addressed to the selected person.

Note: This option is enabled if you have the E-mail application on your Cybiko Xtreme. You can download this application from the Installation CD.

Convert Old Database – converts a database from a Cybiko Classic (*Address/Phone Book* application on Cybiko Classic.)

Note: In order to use this feature, you must copy the file “phonebook.dat” from a Cybiko Classic to your Cybiko Xtreme.

2. Use <Up/Down arrows> to move through the list.
3. Press <Enter> to execute the selected action.

How to perform additional actions on a category

1. Choose a category in the list of categories and press <Menu> or <Fn><Enter>. You will see the list of possible actions:
 - New Category...* (also on <Ins>) – creates a new category.
 - Rename Category* (also on <Enter>) – renames the selected category.
 - Delete Category* (also on) – deletes the selected category with all records belonging to this category.
 - Delete All Categories* – deletes all categories and moves all records to the *None* category.
2. Use <Up/Down arrows> to move through the menu items.
3. Press <Enter> to execute the selected action.

How to exit Address Book

4. Press the <F1> button.
5. Choose the “Exit” item using <Up/Down arrows>.
6. Press <Enter>.

Note: You can also close the application by pressing <Esc> in the main screen.

File Manager

This application provides you with full control of the file structure on your Cybiko Xtreme.

How to start

Select the *Files* icon on the Main Desktop and press <Enter>. You will see the list of disks available (see Fig. 1.)

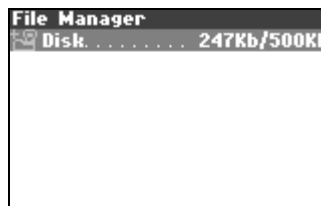


Figure 1. The list of disks available.

Normally, there is only one *Disk* item – your Cybiko Xtreme disk. However, if you have a removable disk connected (such as an MP3 cartridge with an SD/MMC card inserted), you will also see the *Remov.Disk* item. The numbers to the right display the free/total space available on this disk.

Use <Up/Down arrows> to move between these 2 items.

Press <Enter> on *Disk* or *Remov.Disk* to view its contents. You will see the list of files and folders (Fig. 2.)

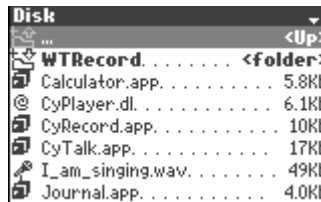



Figure 2. File and folder list.

Folder names are in bold, with this icon to the left: 

File names are in normal font.

How to change disk/folder

To move one level up, move the cursor to the upper line “...” in the file list and press <Enter>, or simply press <Esc>. To open a folder, move the cursor onto it and press <Enter>.

To change a disk, press <F1> to open the task menu and select the *Change Disk* item. Or you can move to the upper level and select one of 2 disks available.

Note: this menu item is enabled only if the removable disk is present in your Cybiko Xtreme.

How to open a file

1. Choose a file or folder that you want to open by using <Up/Down arrows>.
2. Press <Enter> on a file.

The action performed with the file depends on the file type:

FILE TYPE	ACTION
Application (".app extension")	Run the application
Text file (".txt" extension)	View (read-only)
Graphic file (".pic" extension)	View (read-only)
Music file (".music", ".mus")	Play
Any other file type or folder	Open (for files – only if the appropriate application to open files with is installed.)

Or press <Menu> or <Fn><Enter> and choose the appropriate action in the context menu.

Note: if you have the text editor (*Notes*)/graphic editor (*Graphic Editor*) on your Cybiko Xtreme, pressing <Enter> on a text/graphic file will open this file in the editor.

How to create a new folder

To create a new folder, either press <Menu> or <Fn><Enter> and select *New Folder* in the context menu, or press <Fn><Ins>.

How to copy a file

1. Choose a file that you want to copy by using <Up/Down arrows>.
2. Press <Menu> or <Fn><Enter>.
3. Choose *Copy* in the context menu and press <Enter>. The file will be copied to the clipboard.
4. Open the folder to which you want the file to be copied.
5. Press <Menu> or <Fn><Enter>.
6. Choose *Paste* in the context menu. The file will be pasted from the clipboard to the place you have chosen.

Note: If you paste the file to the same directory, you will be asked to enter a new name for this file, because you can't have two files with identical names within a folder.

How to move a file

1. Choose a file that you want to move by using <Up/Down arrows>.
2. Press <Menu> or <Fn><Enter>.
3. Choose *Cut* in the context menu and press <Enter>. The file will be cut to the clipboard.
4. Select the folder to which you would like the file to be moved.
5. Press <Menu> or <Fn><Enter>.
6. Choose *Paste* in the context menu. The file will be pasted from the clipboard to the place you have chosen.

How to rename a file

1. Choose a file that you want to rename by using <Up/Down arrows>.
2. Press <Menu> or <Fn><Enter>.
3. Choose *Rename* in the context menu and press <Enter>.
4. Type the new file name and press <Enter>.

Note: you can only rename user files. You can't rename applications or system files.

How to delete a file

Press on this file and confirm the deletion.

Or

1. Choose a file that you want to delete by using <Up/Down arrows>.
2. Press <Menu> or <Fn><Enter>.
3. Choose *Delete* and press <Enter>.
4. Confirm the deletion.

Note: You will be not allowed to delete system files.

How to upload a file to another Cybiko computer

1. Choose a file that you want to send by using <Up/Down arrows>.
2. Press <Menu> or <Fn><Enter>.
3. Choose *Upload...* in the context menu and press <Enter>.
4. Choose a person to whom you want to send the file using <Up/Down arrows>, and press <Enter>.

Your Cybiko Xtreme will connect wirelessly to your friend's Cybiko computer and announce that you want to send the file. If your friend accepts, the file uploading will start.

How to send a file by e-mail

1. Choose a file that you want to send by using <Up/Down arrows>.
2. Press <Menu> or <Fn><Enter>.
3. Choose *Mail to...* in the context menu and press <Enter>.


You will be taken to the E-mail application with a new e-mail message created containing the selected file as an attachment. Fill the message fields (outgoing address, subject and message text.) As a result, an e-mail message with the selected file attached will be placed in your outbox and sent to your friend as soon as possible.

Note: This menu item is enabled only if you have the E-mail application on your Cybiko Xtreme. You can download it from the Installation CD.

How to share/unshare a file

You can change sharing of your files to allow/disallow other users to access them.

1. Choose a file that you want to share by using <Up/Down arrows>.
2. Press <Menu> or <Fn><Enter>.
3. Choose *Mark Shared/Unshared* in the context menu and press <Enter>.

As a result, the file will become shared/unshared. An eye icon  will appear/disappear to the left of the file name (see Fig. 3.)

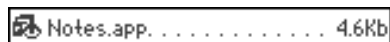


Figure 3. Marking of a shared file.

Note: To be able to download shared files, one must have the *Shared Content* application on his/her Cybiko Xtreme. You can download it from the Installation CD.

How to create shortcuts

1. Choose a file, folder or disk that you want to create a shortcut for by using <Up/Down arrows>.
2. Press <Menu> or <Fn><Enter>.
3. Choose *Create Shortcut* in the context menu and press <Enter>.
4. As a result, a shortcut to this item will appear on the Main Desktop. You can move the shortcut to another Desktop section by pressing <Menu> or <Fn><Enter> on it and selecting *Cut/Paste Shortcut*.

How to view file/folder/disk properties

1. Choose a file, folder or disk by using <Up/Down arrows>.
2. Press <Menu> or <Fn><Enter>.
3. Choose *Properties* in the context menu and press <Enter>.

How to sort the file list

1. Press <F1>. You will see the *task menu*.
2. Choose *Sort Files by* item in the *task menu* and press <Enter>.
3. Choose the parameter by which you want to sort the items and press <Enter>.

How to filter the file list

1. Press <F1>. You will see the *task menu*.
2. Choose "Show Files of Type" item in the *task menu* and press <Enter>.
3. Choose the file type and press <Enter>.

Note: In the list of types, you will see only applications and files of types registered for the applications installed on your Cybiko Xtreme (for example, if you have the text editor *Notes* on your Cybiko Xtreme, you will see the *.txt and *.text file types in the list.)

As a result, you will see only files of the selected type in the file list.

If you want to see files of all types in the list, select *All*.

How to format a card attached

1. Make sure you are on the upper level of the file tree, where *Disk* and *Remov.Disk* items are displayed. Position the cursor on the *Remov.Disk* item.
2. Press <Menu> or <Fn><Enter>.
3. Choose *Format* and press <Enter>.

How to view/change Preferences

1. Press <F1>. You will see the *task menu*.
2. Select the *Preferences...* item and press <Enter>.

You will see the list of parameters.

Use <Up/Down arrows> to choose a parameter.

Press <Fn><Up/Down arrows> to move one page up/down.

Use <Left/Right arrows> or <Select> to change an item value.

Press <Enter> to confirm the entered value or <Esc> to cancel it.

Press <Esc> to return to the file list.

Parameter meanings:

Sort mode - Case sensitive/Case insensitive – determines if letter case is counted when sorting the file list.

Display - Size/Date/None – determines which information will be shown in the file list to the right of the file name.

Folder size - Show/Hide – determines if the folder size is displayed.

Folder position - At top/At bottom/In common order – determines the position of folders in the file list.

Hidden files - Show/Hide – determines if hidden system files are shown.

How to view the system info from the File Manager

1. Press <F1>. You will see the *task menu*.
2. Select the *Show Info* item and press <Enter>.

How to exit

Press <Esc> to move one level up. Press <Esc> on the upper level to exit.

You can also exit by selecting the *Close* item in the context menu (you can open it using <Menu> or <Fn><Enter>) or *Exit* in the *task menu* (you can open it using <F1>.)

System settings

Cybiko Xtreme is very flexible. You can change the configuration of the device quickly by using the *System* section on the Main Desktop.

How to start

Select the *System* icon on the Main Desktop and press <Enter>. You will see the main menu containing the following sections: *General*, *Alerts*, *Clock*, *Function buttons*, and *Communications* (the last item will appear only if the Cybiko Xtreme's owner is under the age of 13.) Press <Enter> on any section to view its contents.

How to change parameters

1. Position the cursor on the item you want to change by using the <Up/Down arrows>.
2. Use <Select> or <Left/Right arrows> to change the value of the item, or type in a new value. If there are preprogrammed values, pressing <Menu> or <Fn><Enter> opens the list of them. Select one and press <Enter>.
3. Press <Enter> or <Tab> to confirm the change you made or <Esc> to cancel it.

How to save changed parameters

As you press <Enter> or <Tab> to confirm the change, the new value is saved.

Or

1. Press <F1>. You will see the *task menu*.
2. Select *Save Settings* and press <Enter>.

How to restore default parameters

1. Press <F1>. You will see the *task menu*.
2. Select *Default Settings* and press <Enter>.

Parameter meanings

General

Password – enables/disables a password, which will be requested when the Cybiko Xtreme is turned on.

Set password – type in your password here. The password must consist of 3 numbers only (e.g. 398.) If you did not enter anything into the password field, the *Password* will be automatically switched to *off*.

ATTENTION! Remember your password. If you forget your password, the only way to activate the device is to search within all 1000 possible passwords or reinstall all software.

Brightness – changes the screen's brightness. You can choose between several standard characteristics (*Lightest, Light, Normal, Dark, Darkest.*) The *Custom...* item allows you to adjust brightness and contrast more precisely (see Fig.1.)

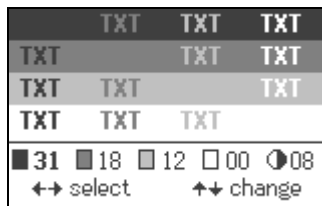


Figure 1. Custom brightness/contrast adjusting.

Use <Left/Right arrows> to move between color and brightness reference boxes. Use <Up/Down arrows> to adjust values. The first four boxes display 4 current screen colors. The rightmost box is for changing brightness. The upper part of the screen shows all color combinations possible.

Note: Pressing <Fn><F2> in any application also changes the LCD brightness.

Contrast – changes the screen contrast. You can choose between several standard characteristics (*Lowest, Low, Normal, Sharp, Sharpest.*) The *Custom...* item allows you to adjust brightness and contrast more precisely (see the *Brightness* description.)

Speaker – enables/disables the sound through the speaker.

Note: Pressing <Fn><F1> turns *Speaker* on. Pressing it again turns it off.

Note: You can also change this by pressing the  button and selecting *Silent/Silent off*.

Note: Even if the speaker is off, you will hear clock alarm and *Date Book* reminder alarm.

Sound type – enables/disables music and/or sound effects.

Note: This does not disable keyboard clicks and sounds on different alert types. To disable keyboard clicks, turn the speaker off. To disable alert sounds, use the *Alert* section.

MP3 sound – enables/disables playing MP3 files through the speaker.

Note: If the *Speaker* setting (see above) is off, playing MP3 files through the speaker is disabled, regardless of the value you select in this section.

Vibration – enables/disables vibration.

Note: Pressing <Fn><F3> turns *Vibration* on. Pressing it again turns it off.

Communications – enables/disables RF Communication. If you turn *Communications* off, your Cybiko Xtreme will not send or receive any RF signals. This can be used when you need to save the battery power.

Note: Pressing <Fn><F5> turns *Communications* on. Pressing it again turns it off.

StartUp Wizard – enables/disables the series of questions about your nickname, age, etc. when your Cybiko Xtreme is loading.

Sharing – enables/disables file sharing. If *Sharing* is off, all your files marked as shared become unavailable for others (they are still marked shared, though.) Once you turn *Sharing* on, all files marked shared become available for others again.

Measurements – you can choose between US measurement units (feet, pounds) and European measurement units (meters, kilograms.) This affects how the *Height* and *Weight* are displayed in the *Profiles* section.

Use as – makes the key function either as <BkSp> or as .

Alerts

Mail Alerts – Press <Enter> to see the list of alerts for new e-mail messages. You can choose whether you wish to hear a sound and/or feel a vibration.

Chat Alerts – Press <Enter> to turn on/off alerts when receiving a private chat message. You can choose whether you wish to hear a sound, feel a vibration, and/or see a dialog box with the text of the message.

Note: While you are on the Desktop (and only there), you will receive all these alerts regardless of what you have entered here.

People Alerts – Press <Enter> to turn on/off alerts when a person who matches the request you have entered in the *Profiles* section appears in your neighborhood. You can choose whether you wish to hear a sound, feel a vibration, and/or see a dialog box for inviting this person to chat.

Note: The *Beep on new people* and *Vibration on new people* settings also affect beep and vibration when any (not only matching your request) person appears in your neighborhood.

Note: While you are on the Desktop (and only there), you will receive all these alerts regardless of what you have entered here.

Games Alerts – Press <Enter> to turn on/off alerts when somebody is inviting you to play a game. You can choose whether you wish to hear a sound, feel a vibration, and/or see a dialog box with the text of the invitation message.

Note: While you are on the Desktop (and only there), you will receive all these alerts regardless of what you have entered here.

Clock

Alarm, Time and Date - these settings allow you to set current time and date as well as enable/disable the alarm.

Note: The current time is displayed in the upper right corner of your Desktop.

Note. Pressing <Fn><F4> turns the alarm on/off.

Function buttons

In this section, you can assign <F2><F7> keys, as well as <Shift><F1> - <Shift><F7> key combinations, to start the application of your choice.

1. Select a key/key combination in the list using <Up/Down arrows>.
2. Press <Select> to cycle through the available applications.

You can select which applications will be cycled – press <Menu> or <Fn><Enter> and select one of these items:

Cycle through all applications – cycling through all applications present on the Cybiko Xtreme.

Cycle through the Main Desktop – cycling through the applications with shortcuts present on the Main Desktop.

Cycle through Apps - cycling through the applications with shortcuts present in the Apps folder on the Main Desktop.

Cycle through Games - cycling through the applications with shortcuts present in the Games folder on the Main Desktop.

Communication Control

This section appears only if the Cybiko Xtreme's owner is under age of 13. Here his/her parent or guardian can enable/disable RF communication. This section is protected by a password (the one that was entered when you turned your Cybiko Xtreme on for the first time.)

Communications – enables and disables RF Communication. If *Communications* are off in this section, you will not be able to turn it on in the *System* section of the Main Desktop or by pressing <Fn><F5>.

Set password – here a new password can be set. The password must consist of up to 5 characters.

ATTENTION! Please remember your password. If you forget your password, the only way to turn communications on is to search all possible passwords or to reinstall all software.

PC AND INTERNET CONNECTIVITY

Cybiko Xtreme has many exciting possibilities, including more games, applications and information, which can be downloaded from the Installation CD.

START BY ESTABLISHING YOUR PERSONAL ACCOUNT AT WWW.CYBIKO.COM.

See the “Register on-line” section to learn about possibilities you get after registering.

To download new programs you'll need a special program called EZ Loader. You can get this program from the Installation CD or from the Cybiko web site.

EZ Loader

EZ Loader is a program providing your Cybiko Xtreme with connectivity to PC and Cybiko web site. EZ Loader features:

- Transferring files between your Cybiko computer and your PC
- Downloading Cybiko games and applications from the Installation CD.
- Upgrading System Pack on your Cybiko Xtreme
- Customizing your personal profile on the Cybiko web site
- Sending/receiving e-mail from your Cybiko mailbox via the Internet
- Synchronization of tasks and contacts on your Cybiko computer with those stored in MS Outlook on your PC
- Synchronization of Cybiko files with those located on PC
- Getting new content you have subscribed for from the Cybiko web site
- Full PC backup of data from your Cybiko Xtreme
- Restoring data on your Cybiko Xtreme from a backup.

You can get EZ Loader either from the Installation CD or from the Cybiko web site.

Note: Do not connect your Cybiko Xtreme to PC during the installation of EZ Loader. First, install EZ Loader, and then connect the Cybiko Xtreme.

See EZ Loader help for further instructions.

Cybiko Wireless Internet Gates

What is Cybiko Wireless Internet Gate

Cybiko Wireless Internet Gate (CyWIG) is a hub-like device that is connected to a PC with Internet access. The CyWIG then sends and receives Cybiko computer radio signals. This system provides wireless Internet access for all Cybiko computers located in its communication range. It means you can send and receive E-mails wirelessly.

Your Cybiko Xtreme also can function as a Virtual CyWIG device – read further.

How to setup Virtual CyWIG on your Cybiko Xtreme™

1. Download the CyWIG program installer from <http://www.cybiko.com/download/application/cwig.asp>.
2. Install it onto your PC.
3. See CyWIG Help for further instructions.

When your Cybiko Xtreme is working as a CyWIG, you will see the CyWIG icon in the System Tray (the right bottom corner of your PC screen.) Your Cybiko Xtreme will become a special communication system – a CyWIG server, which will provide wireless Internet access for all Cybiko computers within its communication range.

Note: While your Cybiko Xtreme is working as a CyWIG, you can't use it in another way. As you exit CyWIG software on your PC, the Cybiko Xtreme will be rebooted, and you will be able to use it in the usual manner.

APPENDIXES

APPENDIX I. CYBIKO XTREME™ MODEL CY44801

Hardware specifications

Main Processor.....	Hitachi H8S/2323 18MHz
Coprocessor.....	Atmel AT90S2313 4MHz
Memory:	
Parallel read-only flash.....	512Kb
Disk (electronic RAM-Disk).....	500Kb
RAM.....	1.5Mb
LCD Grayscale screen.....	160x100 pixels, 54x35 mm
RF transceiver.....	RF2915
Expansion cartridge slot.....	24-pin proprietary
PC/charging unit connection socket.....	USB
Size.....	81 mm x 141mm x 19mm (3.2" x 5.6" x 0.8")
Weight.....	150 g (0.33 lbs.)

Software specifications

Operating System.....	CyOS™ v.1.5
Software.....	CyOS™ v.1.5 compatible applications
Communication Protocol.....	CyDP x.30 (Cybiko RF Digital Protocol) and Fast Communication Protocol
Dynamic Virtual Local Wireless Network.....	automatically provided by CyOS™ and CyDP

RF communication features

Frequency.....	902-928 MHz
Number of channels.....	30 digital channels
Communication Rate.....	19200 bps each channel
Chat Communication Range.....	up to 150 ft indoor, up to 500 ft outdoor (environment dependent)
File Transfer/Multi-Player Game Range.....	65 ft
Max. on-line Cybiko computers.....	3000 (100 units on each of 30 channels)

Other

Vibration alert ▪ Speaker ▪ Microphone ▪ 55 button keyboard ▪ Antenna

Accessories included

USB Cable ▪ 120V Power Supply ▪ Installation CD ▪ Quick Start Guide ▪ MP3 Player Rebate Form

System requirements

Pentium® 166 MHz or higher ▪ Microsoft Windows ®'98, 2000, or ME ▪ Mouse ▪ Available self-powered USB port ▪ Internet connection with Microsoft® Internet Explorer 5.0 or higher ▪ 64Mb RAM ▪ 35 Mb free Hard Drive space ▪ 4x CD-ROM Drive ▪ Recommended: 800x600 monitor resolution and 256 color depth

APPENDIX II. WARNING STATEMENTS

General precautions

1. Cybiko Xtreme is a wireless communications computer using digital RF transmissions. It meets all safety requirements as issued by the FCC part 15.
2. In some indoor locations, "dead spots" can be found where RF reception is very difficult. But they are usually very localized, and can be avoided by moving around.

Rechargeable NiMH battery warning

This equipment contains rechargeable NiMH batteries.

1. The rechargeable NiMH batteries contained in this equipment may explode if disposed of in a fire.
2. Do not short-circuit the batteries.

Note: The batteries in your Cybiko Xtreme are not removable.

Important safety instructions

When using Cybiko Xtreme, these basic safety precautions should always be followed to reduce the risk of fire, electrical shock, and injury to persons:

1. Read and understand all instructions.
2. Unplug this product from the wall outlet before cleaning. Use a dry cloth for cleaning. **DO NOT** use liquid or aerosol cleaners.
3. Do not place this product on an unstable cart, stand, or table. Cybiko Xtreme may fall, causing serious damage to the unit.
4. Slots and openings in the plastic case are provided for ventilation and the addition of cartridges. To protect the product from overheating, these openings must not be blocked or covered. This product should never be placed near or over a radiator or heat register. This product should not be placed in a closed environment unless proper ventilation is provided.
5. This product should be operated only from the type of power source indicated on the marking level. If you're not sure of the type of power supply to your home, consult your dealer or local power company.
6. Do not allow anything to rest on the power cord. Do not locate this product where the cord can be damaged by persons walking on it.
7. Do not overload wall outlet and extension cords, as this can result in the risk of fire or electrical shock.
8. Never push objects of any kind into this product through the open slots other than the items designed specially for Cybiko Xtreme, as they may touch dangerous voltage points or short out parts that could result in the risk of fire or electric shock. Never spill liquid of any kind on the product.
9. To reduce the risk of electric shock, do not disassemble this product. Take it to qualified service personnel when service or repair work is required.

Note: Disassembling of the product can void your warranty.

10. Cybiko, Inc. **DOES NOT** represent this unit to be waterproof. To reduce the risk of fire, electrical shock, or damage to the unit, **DO NOT** expose this unit to rain or moisture.

Important electrical considerations

Unplug all electrical appliances when you know an electrical storm is approaching. Lightning can pass through your household wiring and damage any device connected to it, including the Cybiko Xtreme. Warning! Please do not attempt to unplug any appliance during an electrical storm.

The FCC wants you to know

This device has been tested and found to comply with the limits for a Class B digital device, pursuant to Part 15 of the FCC Rules. These limits are designed to provide reasonable protection against harmful interference in a residential installation. This device generates, uses, and can radiate radio frequency energy and, if not installed and used in accordance with the instructions, may cause harmful interference to radio communications. However, there is no guarantee that interference will not occur in a particular installation. If this device does cause harmful interference to radio or television reception, the user is encouraged to try to correct the interference by one or more of the following measures:

- Reorient or relocate the receiving antenna.
- Increase the separation between the computer and receiver.
- Plug the computer into an outlet on a different circuit from the one to which the receiver is connected.
- Consult an experienced radio/TV technician for help.

Caution: Any changes or modifications not expressly approved by the guarantee of this device could void the user's authority to operate the equipment.

APPENDIX III. WHAT TO DO IF YOUR CYBIKO XTREME™ DOES NOT WORK PROPERLY

DO NOT IMMEDIATELY TAKE YOUR CYBIKO XTREME BACK TO THE RETAIL LOCATION FOR REPAIR. Also, check the following before contacting Cybiko, Inc. for the assistance.

The screen stays blank even though the power is ON

1. Your device may be in automatic or “forced” Sleep mode. Press any key to return to operation.
2. Your Cybiko Xtreme may need to be reset. Press the Reset button on the left side of your Cybiko Xtreme to reboot it.
3. The batteries may need to be charged (see the “Recharging Your Batteries” section.)

The device does not respond to pressing keys, but is supposed to

Press the Reset button on the left side of the device to reboot the Cybiko Xtreme.

No sound

1. Check if the Cybiko Xtreme is on.
2. The Cybiko Xtreme is in the *Silent* mode. You need to turn the sound back on. Press <Fn><F1> to cancel the *Silent* mode.
3. Check the sound settings in the *System* section of the Main Desktop.

Your Cybiko Xtreme™ does not communicate with other Cybiko computers even at close distances

1. Check if the Communications feature was turned off. Press <Fn><F5> to turn it on.
2. If the Communications still don’t work (and if you are under the age of 13), your Cybiko Xtreme communications can be in the “Adult Control” mode. Ask your parent or guardian to unlock the Communications (see the “Communications: Adult Control” paragraph in the “System Settings” section for details).
3. Be sure your antenna is placed at a 90-degree angle to the unit.
4. Move your Cybiko Xtreme away from all large metal objects and metal construction.
5. Try not to touch the antenna with any part of your body while communicating.

No vibration

1. Check if the Cybiko Xtreme is on.
2. Vibration was turned off. Press <Fn><F3> to turn it on.

Battery charge displayed is low, although I know my Cybiko Xtreme™ is charged

1. Right after you purchased the Cybiko Xtreme, the battery charge displayed can differ from the actual battery charge. To eliminate this effect, charge your Cybiko Xtreme for 5 hours.
2. When you turn your Cybiko Xtreme on, the battery charge indicator will show the correct value in one minute after turning on. This time is required to gather the correct battery charge data.
3. If you used the Reset button and/or updated System on your Cybiko Xtreme, a difference between actual and displayed battery charge can appear. To eliminate this effect, charge your Cybiko Xtreme until it is fully charged (this can take from 0.5 hours to 5 hours.)

IF YOU CANNOT CORRECT THE PROBLEM, DO NOT TAKE THE PRODUCT BACK TO THE RETAIL LOCATION FOR REPAIR.

WRITE TO OPERATIONS@CYBIKO.COM FOR CUSTOMER SERVICE SUPPORT.

APPENDIX IV. WARRANTY AND SERVICE INFORMATION

Warranty Information

Cybiko Inc. Limited Hardware Warranty (“Warranty”) obligations are limited to the terms set forth below. Cybiko Inc. (“Cybiko”) warrants this hardware product against defects in materials and workmanship for a period of one (1) year from the date of original retail purchase. If a defect exists in the Cybiko Xtreme, USB cable or power adapter, Cybiko will either repair or replace the product at no charge. To do so, Cybiko may use either new or refurbished parts, or Cybiko may exchange the product with a product that is

new or which has been manufactured from new or serviceable used parts and is at least functionally equivalent. A replacement product assumes a warranty of 90 days. If Cybiko does not either restore the product to good working condition after a reasonable number of attempts or replace the product, Cybiko will refund the purchase price of the product. When a product or part is exchanged or a refund given, the replacement item, if any, becomes your property and the replaced items, or the item for which the refund was given, becomes the property of Cybiko or its Authorized Service Provider. When sending units into Cybiko for repair, you "Consumer" are responsible for shipping costs involved in shipping the unit to the Cybiko repair center. Cybiko, in return, will ship the replaced or refurbished unit at no cost to the consumer.

Exclusions and Limitations

This Warranty applies only to hardware products manufactured by or for Cybiko that can be identified by the Cybiko trademark, trade name, or logo affixed to them. Cybiko and its Authorized Service Providers are not liable for any damage to or loss of any programs, data, or other information stored on any media, or any products or parts not covered by this Warranty. Recovery and reinstallation of system and application software and user data are not covered under this Warranty.

This warranty shall not apply if the product:

1. Is used with products not sold or licensed by Cybiko (including, but not limited to, non-licensed games and application enhancements and copier devices, adapters, and power supplies.)
2. Is used for commercial purposes (including rental.)
3. Is modified or tampered with.
4. Is damaged by negligence, accident, unreasonable use, or by other causes unrelated to defective materials or workmanship.
5. Has had the serial number altered, defaced or removed.

Any applicable implied warranties, including Warranty Of Merchantability and fitness for a particular purpose, are hereby limited in duration to the warranty period described above (12 months, as applicable.) In no event shall Cybiko be liable for consequential or incidental damages resulting from the breach of any implied or express warranties. Some states do not allow limitations on how long an implied warranty lasts or exclusion of consequential or incidental damages, so the above limitations may not apply to you.

This Warranty gives you specific legal rights, and you may also have other rights which vary from state to state.

This Warranty is valid in the United States.

Governing Law

This Warranty shall be governed by the laws of the State of Illinois excluding its conflict of law principles and excluding the United Nations Convention on Contracts for the International Sale of Goods.

Note: All purchases made through a retailer are subject to that specified retailer's Return Policy.

All purchases made on the Cybiko website are subject to the terms and conditions specified by Cybiko. View the Cybiko Return Policy at: http://www.cybiko.com/shop/support/policy_returns.asp.

Service After Expiration of Warranty

Please contact Customer Service at operations@cybiko.com for trouble shooting assistance. In some instances, it may be necessary for you to ship the complete product, FREIGHT PREPAID AND INSURED FOR LOSS OR DAMAGES, to the nearest service location. Please do not send any products to Cybiko without contacting us first. See WWW.CYBIKO.COM.

License Agreement

CYBIKO, INC. ('CYBIKO') IS WILLING TO LICENSE THE ENCLOSED CYBIKO PRODUCT AND USER GUIDE ('PRODUCT') TO YOU ONLY ON THE CONDITION THAT YOU ACCEPT THE TERMS AND CONDITIONS OF THIS LICENSE AGREEMENT ('AGREEMENT').

YOUR USE OF THE PRODUCT INDICATES YOUR ACCEPTANCE OF THE TERMS AND CONDITIONS OF THIS AGREEMENT. IF YOU DO NOT AGREE TO THE TERMS AND CONDITIONS OF THIS AGREEMENT, THEN DO NOT PROCEED ANY FURTHER AND RETURN THE UNUSED PRODUCT TO THE AUTHORIZED RESELLER FROM WHOM YOU OBTAINED THE PRODUCT WITHIN TEN (10) DAYS OF PURCHASE FOR A FULL REFUND OF THE PURCHASE PRICE.

The enclosed Product contains both hardware and software components. The software is licensed to you. You agree to use the Product solely for your personal use and enjoyment as permitted in the User Guide. The Product is protected by national and international patent, copyright, trade secret, trademark and other intellectual property laws, regulations and treaties. Cybiko and its licensors retain exclusive ownership of the software and all intellectual and other proprietary rights in or related to the Product. You may not delete or obscure any proprietary or confidentiality legends on the Product. You shall not copy, modify or prepare derivative works of the Products, in whole or in part. You shall not reverse engineer, decompile, disassemble the Products, or apply any process, technique, or procedure or make any attempt to ascertain or derive any source code in or related to the Products, except as and to the extent you are legally authorized to do so under applicable law despite this restriction.

APPENDIX V. PATENT INFORMATION

This product successfully passed the PCT search (PCT/RU 99/00078.)

Patents issued and pending in Japan, US, Canada and elsewhere. For a full listing, please contact the company.

Cybiko, Cybiko Xtreme, CyWIG and CyOS are trademarks of Cybiko, Inc. in the United States and/or other countries.

Microsoft and Windows are registered trademarks of Microsoft Corporation in the United States and/or other countries.

APPENDIX VI. HOW TO CONTACT US

For questions please check our posted FAQ's at www.cybiko.com/faq or send an e-mail to operations@cybiko.com. For further information, please refer to our web site, www.cybiko.com.